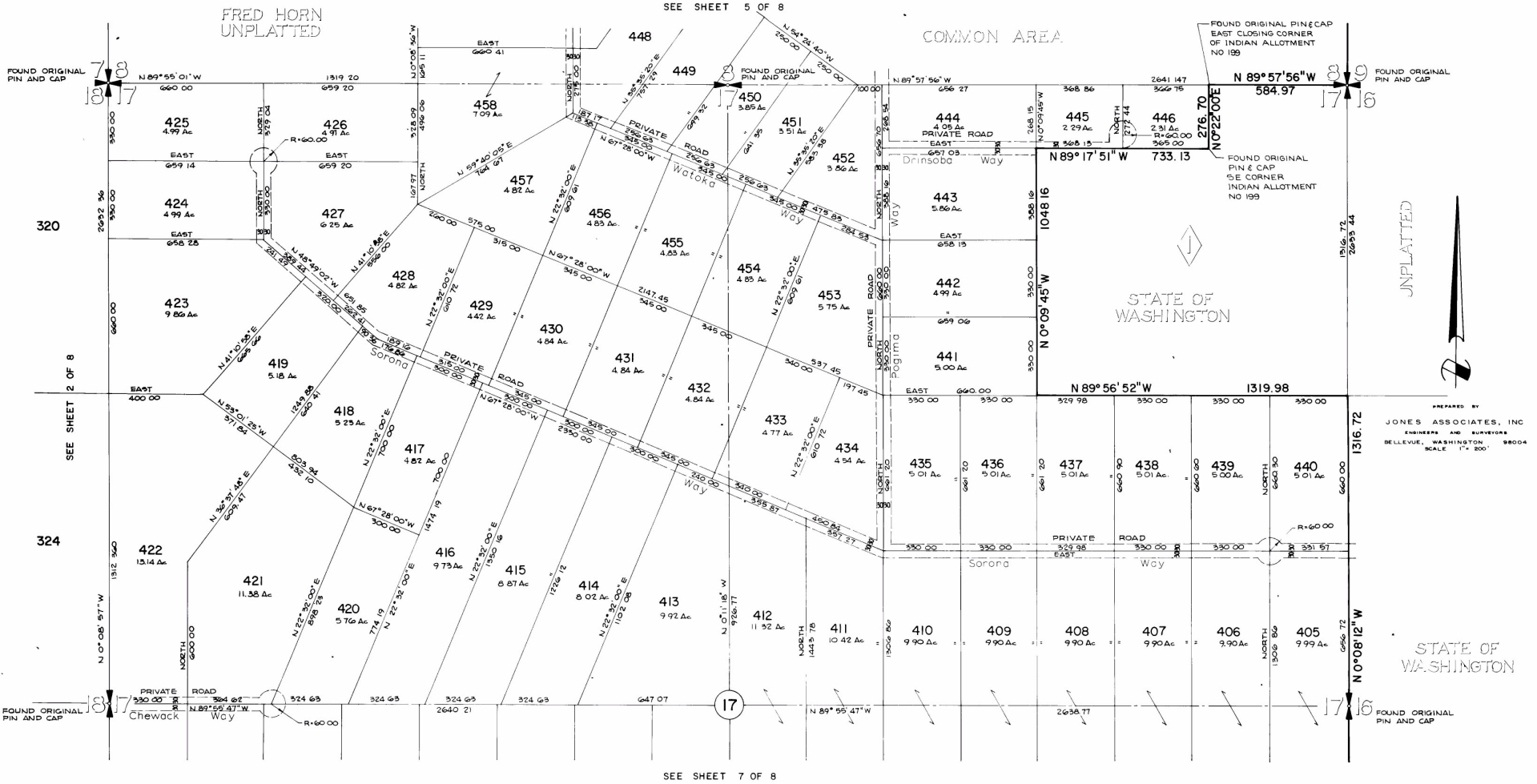


LYMAN LAKE RANCHES OF SUN RANCH DIVISION No. I

PORTIONS OF SECTIONS 8, 16, 17, 18, 19, 20, & 21, TWP 35 N, RGE 31 E, W.M.
OKANOGAN COUNTY, WASHINGTON



UNPLATTED



STATE OF WASHINGTON

PREPARED BY
JONES ASSOCIATES, INC.
ENGINEERS AND SURVEYORS
BELLEVUE, WASHINGTON 98004
SCALE 1" = 200'

STATE OF WASHINGTON