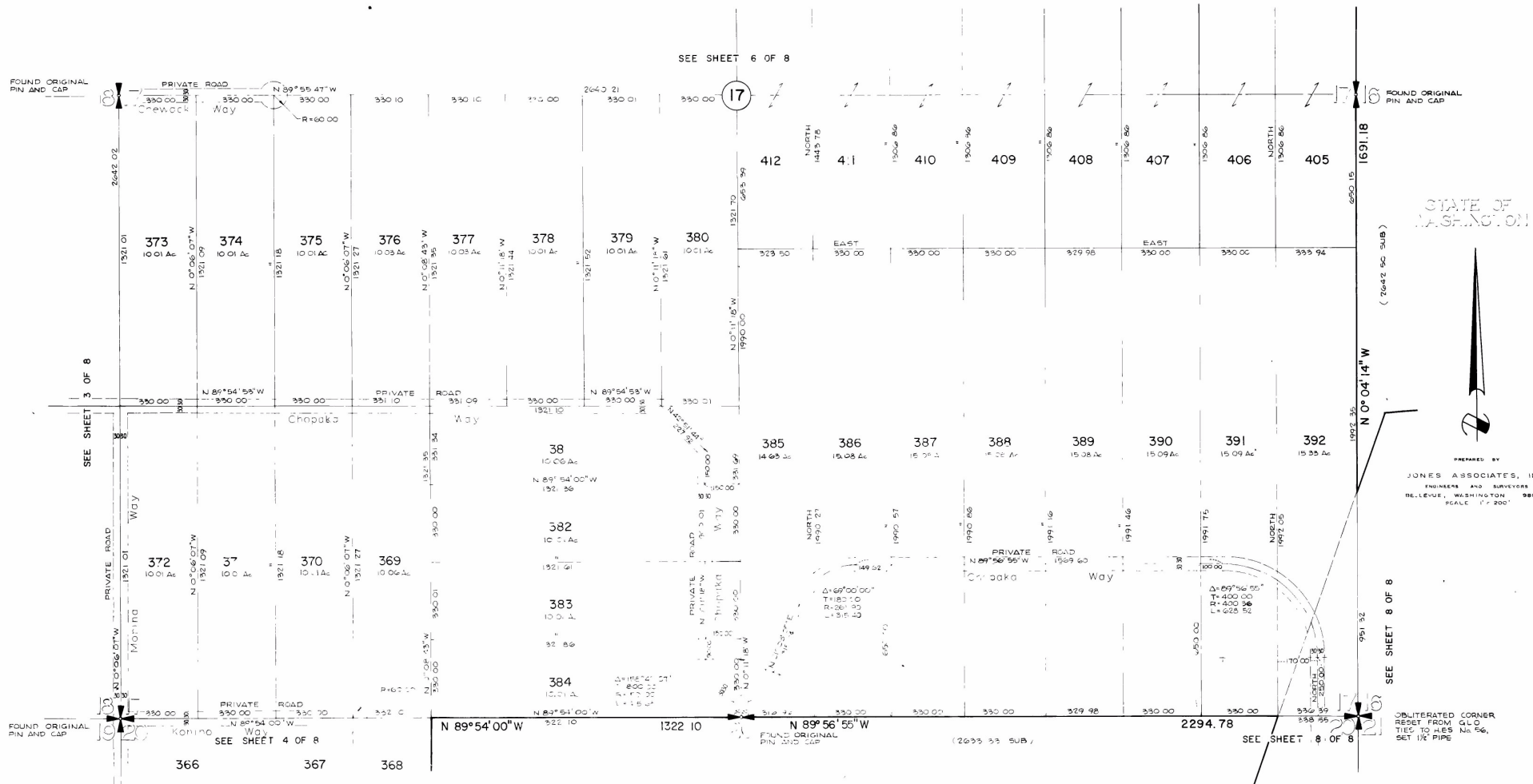


LYMAN LAKE RANCHES OF SUN RANCH

DIVISION No. 1

PORTIONS OF SECTIONS 8, 16, 17, 18, 19, 20, & 21, TWP 35 N, RGE 31 E, W.M.
OKANOGAN COUNTY, WASHINGTON



STATE OF WASHINGTON



PREPARED BY
JONES ASSOCIATES, INC
ENGINEERS AND SURVEYORS
BELLEVUE, WASHINGTON 98004
SCALE 1" = 200'

SEE SHEET 8 OF 8

OBLITERATED CORNER
RESET FROM G.L.O.
TIED TO HES No. 56,
SET 1/2" PIPE