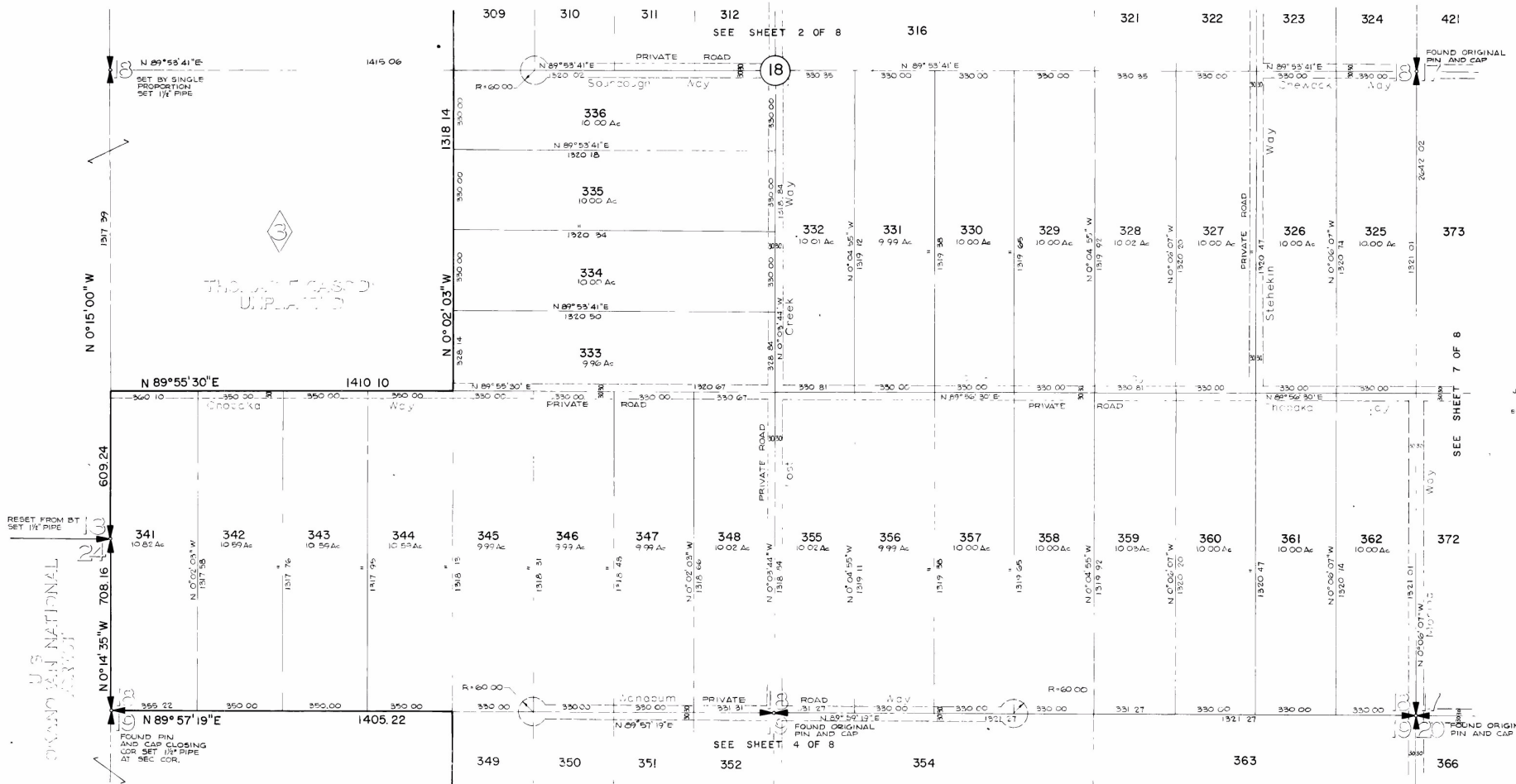


LYMAN LAKE RANCHES OF SUN RANCH

DIVISION No. 1

PORTIONS OF SECTIONS 8, 16, 17, 18, 19, 20, & 21, TWP 35 N, RGE 31 E, W.M.
OKANOGAN COUNTY, WASHINGTON



THOMPSON CREEK UPLANDS

PREPARED BY
 JONES ASSOCIATES, INC.
 ENGINEERS AND SURVEYORS
 812 1/2 23RD AVENUE S.W.
 SEASIDE, WASHINGTON 98044
 SCALE 1" = 200'